



Pulteney Close, London, E3

BUTLER  STAG





# Spacious three bedroom end of terrace house situated just moments from Victoria Park and the beating heart of Bow, the historic and vibrant Roman Road.



- Three Double Bedrooms
- Separate Kitchen
- Central Bow Location
- Part Furnished
- Spacious End of Terrace House
- Private Rear Garden
- Moments from Victoria Park & Roman Road
- Available from Early November 2025

Set within a quiet residential close, this three-storey property spans over 1100 Sq/Ft and features three true double bedrooms, including a bright and over-sized principal bedroom on the top floor. Further comprising of a large reception which opens out onto a private rear garden, a separate kitchen, downstairs WC and main bathroom, this house is perfectly suited to a family or three sharing professionals.

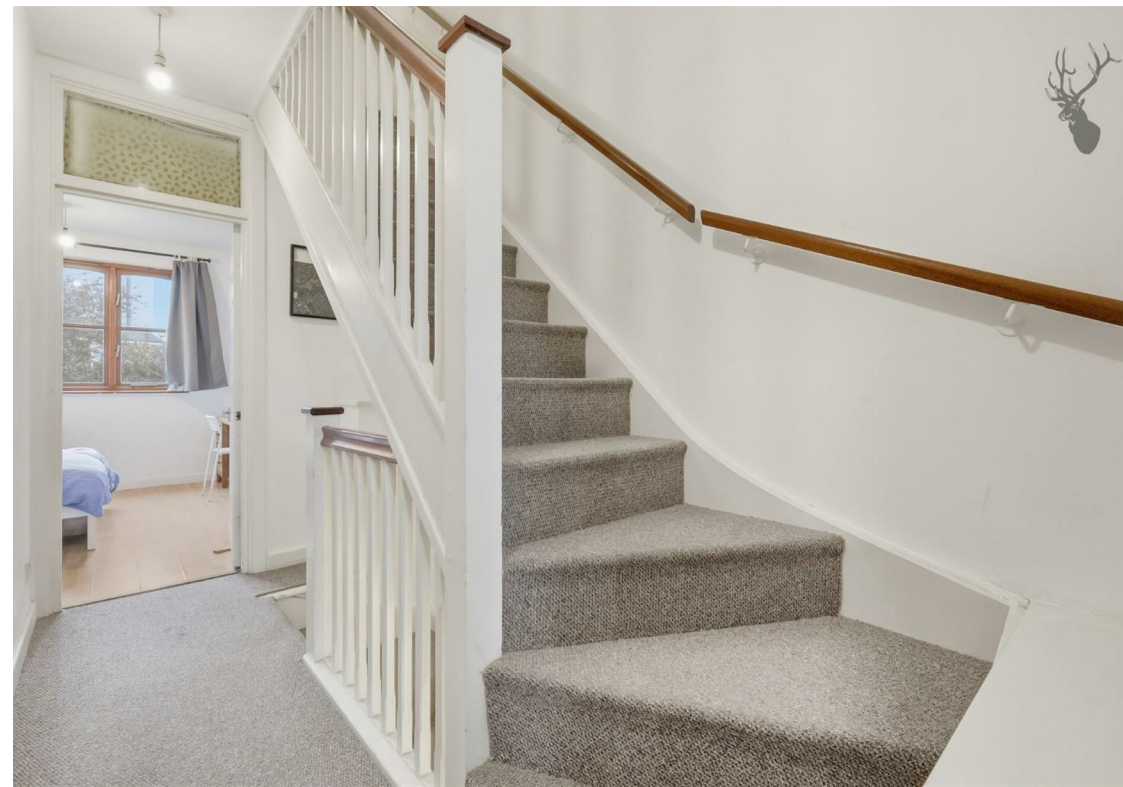
Aside from the plethora of amenities on your doorstep, the property is well-served by transport links including Mile End, Bow Road and Bow Church stations all within walking distance, as well as excellent and frequent bus links towards the City.

Offered part furnished and available from early November 2025.

EPC Rating D  
Council Tax Band D



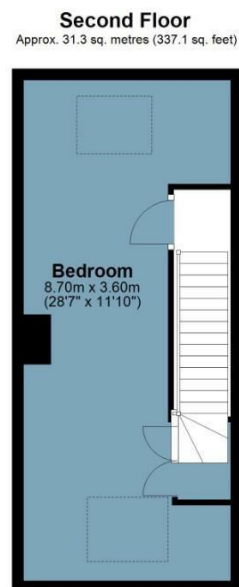
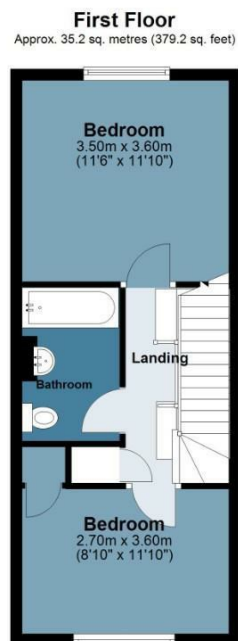
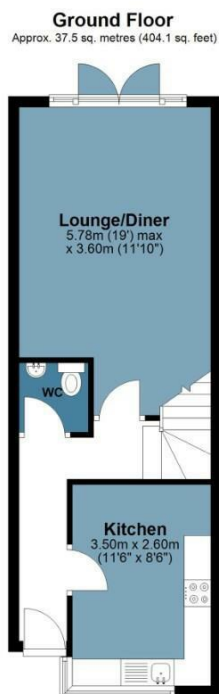




## Pulteney Close

Approx. Gross Internal Area 104.1 Sq M ( 1120.4 Sq Ft )

BUTLER & STAG



Measurements are approximate and for illustration purposes only. While we do not doubt the accuracy and completeness, we advise you conduct a careful independent assessment of the property to determine monetary value.  
© @modephoto.uk www.modephoto.co.uk

IMPORTANT NOTICE - These particulars have been prepared in good faith and they are not intended to constitute part of an offer or contract. We have not performed a structural survey on this property and the services, appliances and specific fittings have not been tested. All photographs, measurements, floor plans and distances referred to are given as a guide and should not be relied upon.

BUTLER & STAG

☎ 020 8102 1236

🏠 508 Roman Road, Bow, London, E3 5LU

✉ bow@butlerandstag.com

[www.butlerandstag.uk](http://www.butlerandstag.uk)